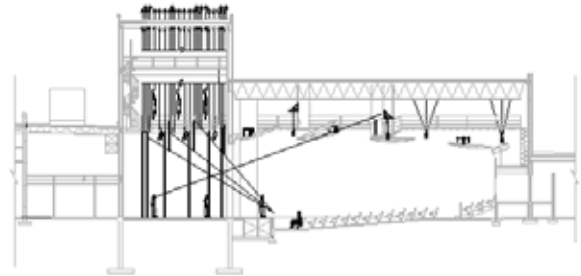


# [ lakeridge high school ]

auditorium replacement  
lake oswego, oregon



Centerline Section through main auditorium



## Project Statistics

Scope:

Total Seats:

Rigging Sets:

Lighting Ckts:

Architect:

PLA Project Lead:

Completed:

Design of Auditorium and  
Black Box Studio Theater

Main Auditorium: 550    Black Box: 200

24

224

LSW Architects, P.C.

Greg Long

May 2004

## Design Services Included- Auditorium:

- Space Shaping Assistance
- Seating & Sightline Planning
- Stage Rigging & Draperies
- House, stage and work lighting
- Dimming & Controls
- Acoustical Reflectors
- Catwalks

## Design Services Included-Black Box:

- Draperies and tracks
- House, stage and work lighting
- Dimming and controls
- Studio pipe grid



 **pladesigns**<sup>inc</sup>  
theater planners • lighting consultants

www.pladesigns.com  
tel: 503 624 2168 • fax: 503 649 6882  
7252 sw 204<sup>th</sup> ave • suite 2  
alohe, oregon 97007