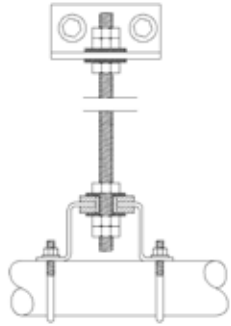


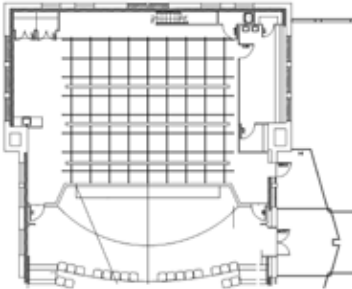


Used by permission of George Fox University - © 2002

Exterior view of Arts building



Pipe Grid Hanger Detail



Main Stage Grid

[wood-mar theatre renovation]

george fox university
newberg, oregon

Project Statistics

Scope:	Theater Lighting
Total Seats:	400
Project Cost:	\$2 Million Total
Architect:	Soderstrom Architects, PC
PLA Project Lead:	Paul Luntsford, LC
Opened:	1996



Image used by permission of Soderstrom Architects - © 2002

Design of renovated 400 seat experimental thrust/proscenium theatre space, with lighting grid, drapery and tracks, track switching system, stage and house lighting, lighting controls and lighting distribution devices.

 **pladesigns** inc
theater planners • lighting consultants

www.pladesigns.com
tel: 503 624 2168 • fax: 503 649 6882
7252 sw 204th ave • suite 2
aloha, oregon 97007